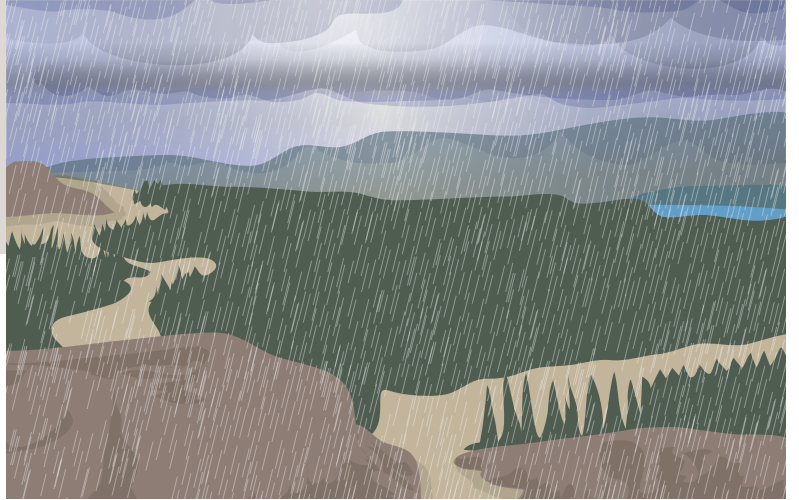


Mount Polley Long-term Water Management Plan

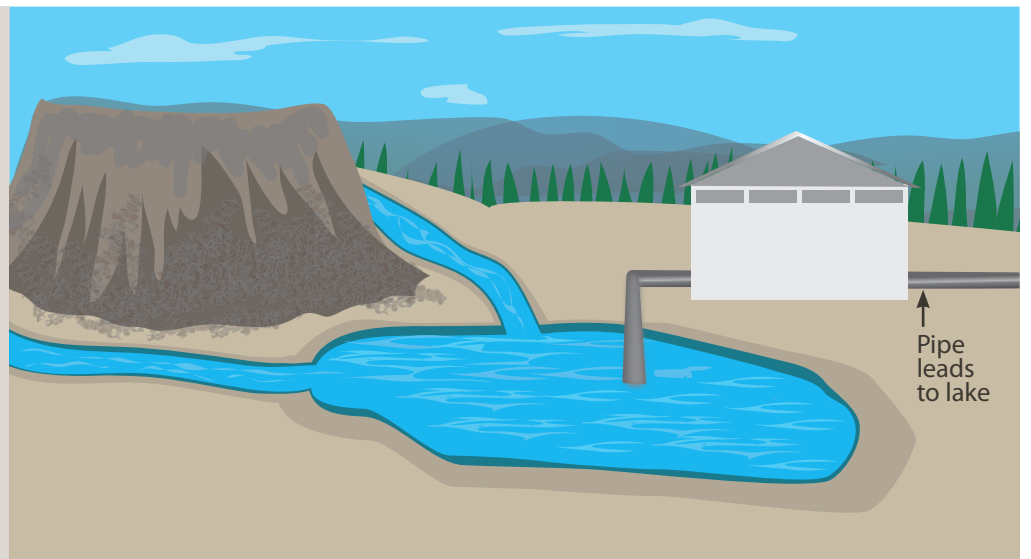
The long-term water management plan was approved by an independent statutory decision-maker from the Ministry of Environment after taking into account best available scientific evidence and extensive public and First Nations consultation.

Rainfall mixes with water that has come in contact with mining waste. This mine water can have elevated levels of elements such as Selenium and Copper.



Ditches and sediment ponds are in place on the downslope of the west and east sides of the mine site.

Numerous ditches drain into small ponds that allow for settling of solids in the water. Water is then routed to the treatment plant where additional sampling is conducted.



In the treatment plant, the mine water goes through a mixing and filtering process which reduces the levels of elements, such as Selenium and Copper, in the water.



Water samples are taken at the end of treatment, prior to entering the lake, to ensure compliance with permit limits.



The treated water is sent through a pipe to Quesnel Lake at a depth of 45 metres and 250 metres away from the shore where it is diluted by mixing with lake water as fast as possible.

Water sampling of Quesnel Lake occurs to ensure all water quality guidelines are being met.



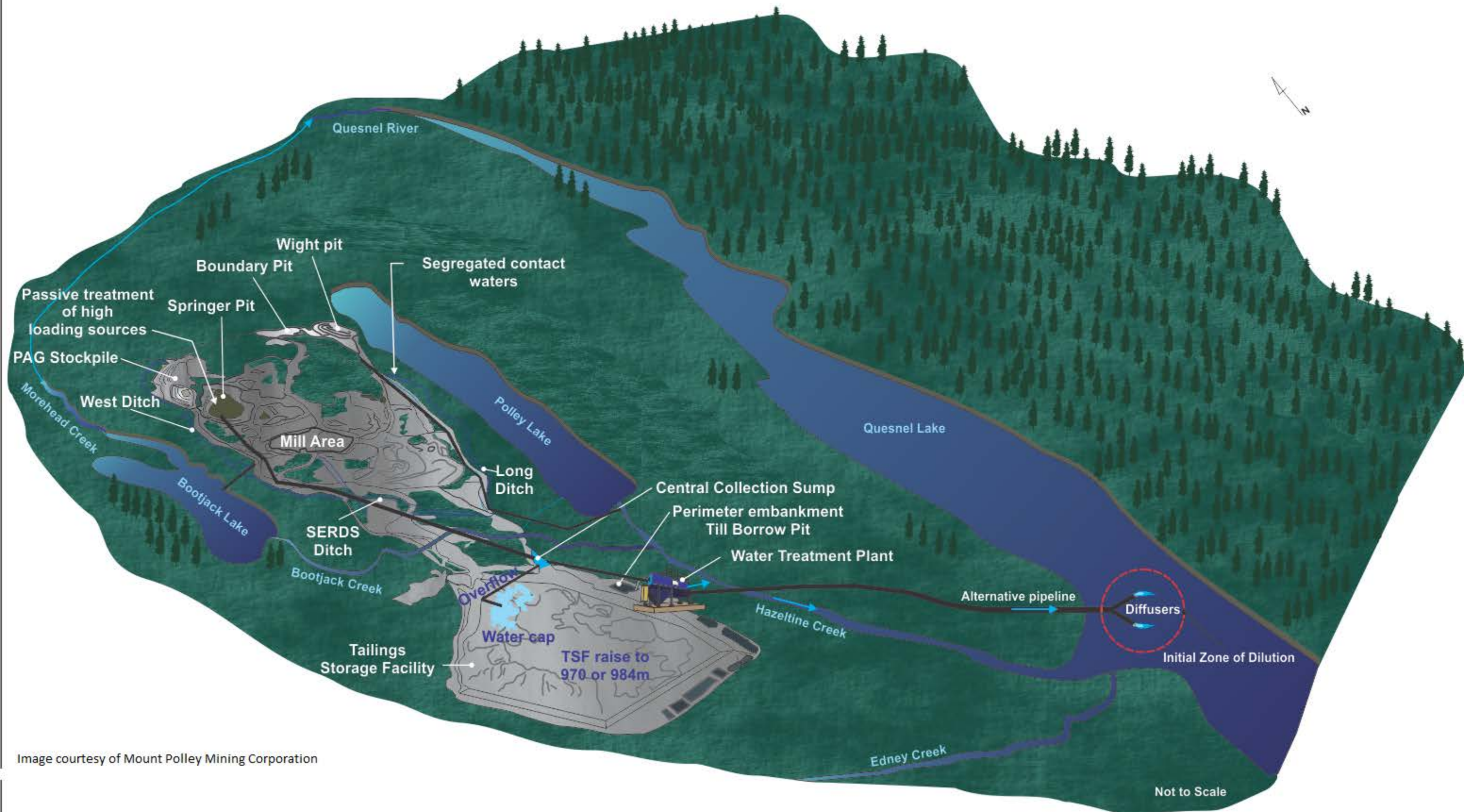


Image courtesy of Mount Polley Mining Corporation

MOUNT POLLEY - LONG TERM OPERATIONS